

PIXX 1212

Wireless Flat-panel X-ray Detector



Features

High Image Quality

High X-ray Sensitivity

High Speed Image

Gigabit Wi-Fi IEEE 802.11ac

Light & Slim Design

Less than 2Kg with battery

Internal Image Memory

Image saved up to 200 images

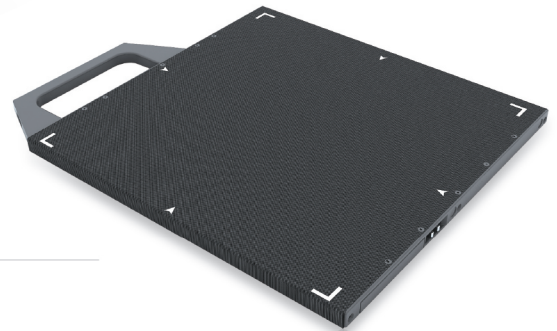
Web Viewer

Image review from any mobile devices

PIXX  EN

PIXX 1212

Wireless Flat-panel X-ray Detector



Application

Equine / Large Animal : Ultra Light Weight (1.9kg)
Pediatric / Neo-Natal : Fit for the NICU and Neonatal isolette trays
Podiatric : Easy and Simple Maneuvering with light weight

Features

Fast image acquisition time
Light and slim design
Inner storage : 200 images can be saved in detector
Web Viewer : Direct image review from any mobile devices
Long Battery life time

Specifications

Application	General Radiography
Sensor	a-Si TFT array Flat Panel Detector
Conversion Screen	CsI/GOS
Active Area	12 × 12 inch(287mm × 287mm)
Sensor Pixel	2,048 × 2,048(4.1M pixels)
Pixel Pitch	140 μm
Image Data	16 bit
Trigger Mode	AED(Automatic Exposure Detection), Manual Trigger
Calibration Mode	ACC(Auto Calibration Control), Manual Calibration
Data Transfer Time	Less than 1 sec.
Capture Cycle Time	3~5 sec. (Approx.)
Wired Interface(Data Output)	Gigabit Ethernet
Wireless Standard	IEEE 802.11ac
Display	OLED 128 × 32
Dead Space	5.8mm
Dimensions(W × L × T)	308.5mm × 319.5mm × 15mm (Cassette-size for the standard table or wall Bucky)
Weight	1.5kg(Without Battery) / 1.9kg(Including Battery)
Battery Type	Lithium ion Polymer Battery



PIXXGEN

PIXXGEN Corporation

5F, SMART BAY, 123, Beolmal-ro, Dongan-gu, Anyang-si, Gyeonggi-do, 14056, Korea
Tel. +82.70.4846.8888 Fax. +82.2.6455.2905 sales@pixxgen.com

Ver.0
www.pixxgen.com
©2018 PIXXGEN. All rights reserved.